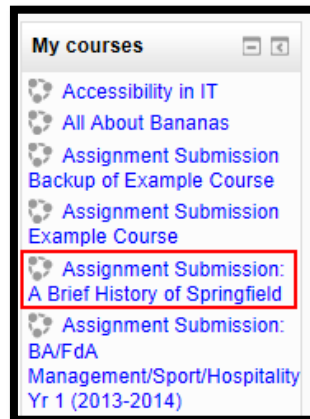


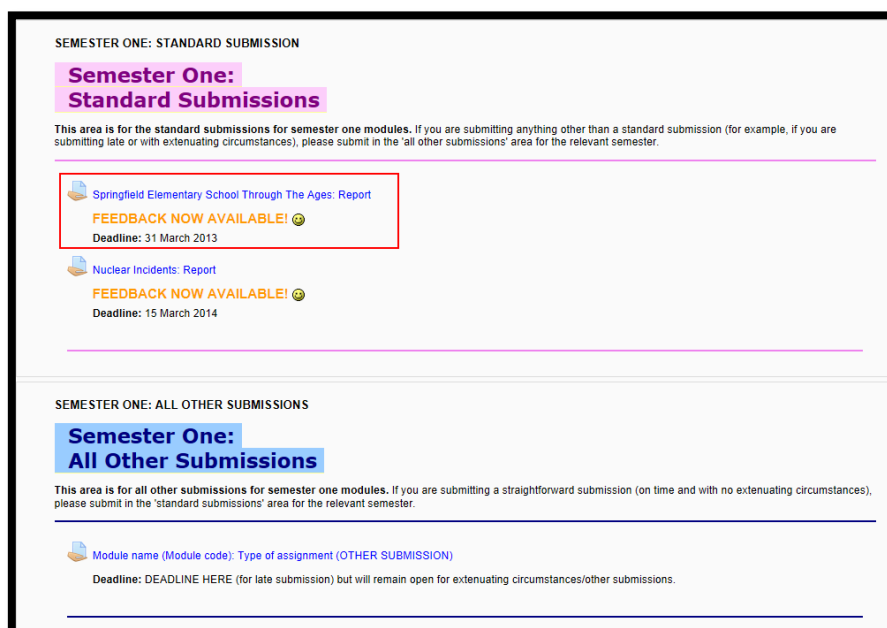
COLLECTING AND SAVING FEEDBACK FROM MOODLE

Moodle is reset during the Summer, so please ensure that you download your feedback prior to the end of year Boards for your area.

First, find the submission area that you submitted the work into. This will be under the My Courses section of your Moodle homepage.



Then find the correct assignment. Remember, assignments are grouped by semester and that any submissions that had extensions or other circumstances will be under All Other Submissions.



Click on the blue link.

Assessments will be hidden after the deadline has passed, until feedback has been released, so if you are not able to find your assignment, then it's likely that the feedback is not yet ready.

Springfield Elementary School Through The Ages: Report

FEEDBACK NOW AVAILABLE!

Deadline: 31 March 2013

Submission status

Submission status	Submitted for grading
Grading status	Graded
Last modified	Thursday, 12 June 2014, 3:07 PM
File submissions	Springfield Elementary Assignment.docx
Submission comments	Comments (0)

Feedback

Grade	64.00 / 100.00
Graded on	Thursday, 12 June 2014, 3:09 PM
Graded by	Judy Stanton

Once you are in the assignment page, you will see a page similar to above. This will contain your grade, and feedback in one of two ways.

IF YOUR FEEDBACK IS IN FILE FORM

Feedback

Grade	64.00 / 100.00
Graded on	Thursday, 12 June 2014, 3:09 PM
Graded by	Judy Stanton
Feedback files	Simpson, Bart - Feedback.docx

In order to view and save your feedback, click on the blue link in the feedback files section.

Springfield Elementary School Through The Ages: Report

FEEDBACK NOW AVAILABLE!

Deadline: 31 March 2013

Submission status

Submission status	Submitted for grading
Grading status	Graded
Last modified	Thursday, 12 June 2014, 3:07 PM
File submissions	Springfield Elementary Assignment.docx
Submission comments	Comments (0)

Feedback

Grade	64.00 / 100.00
Graded on	Thursday, 12 June 2014, 3:09 PM
Graded by	Judy Stanton
Feedback files	Simpson, Bart - Feedback.docx

You are logged in as Bart Simpson (Logout)

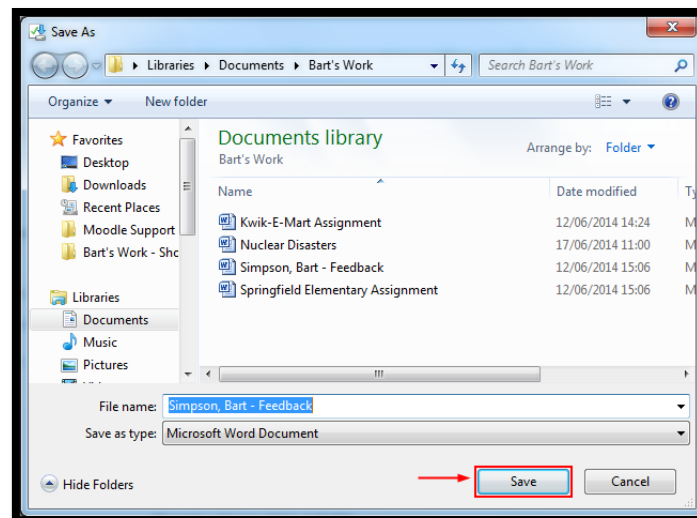
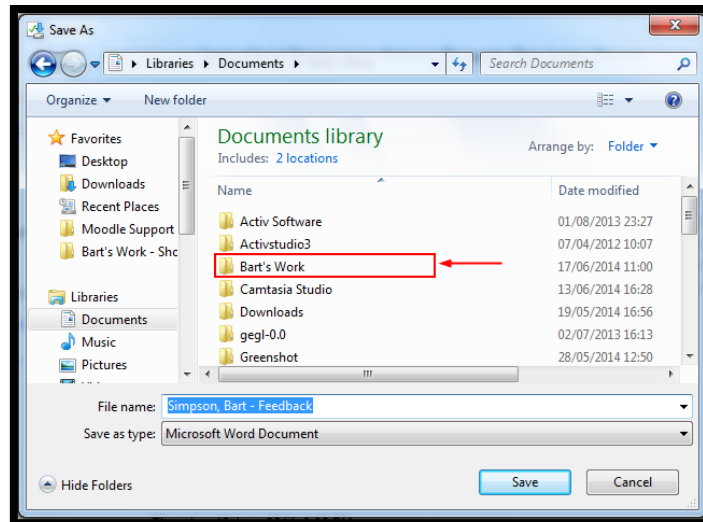
Assignment Submission: A Brief History of Springfield

Do you want to open or save Simpson, Bart - Feedback.docx (12.3 KB) from moodle.cc.colchester.com?

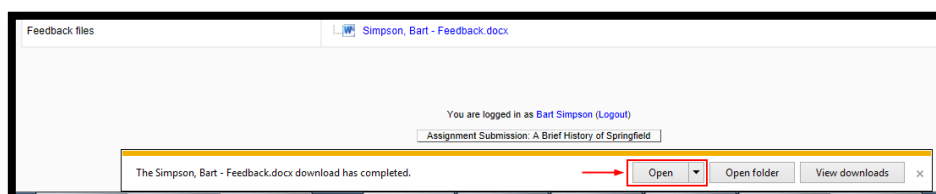
An orange box will open at the bottom of the screen giving the option to Save the file. Click on the black arrow at the right of this box, and choose the Save As option.



Find the location that you wish to save the files.



And click Save. In order to open the file, you can click on the Open button or locate the file where it is saved. You can then print this from whichever programme it opens in.



IF YOUR FEEDBACK IS IN THE FEEDBACK COMMENTS SECTION

Nuclear Incidents: Report

FEEDBACK NOW AVAILABLE! 😊

Deadline: 15 March 2014

Submission status

Submission status	Submitted for grading
Grading status	Graded
Last modified	Tuesday, 17 June 2014, 11:01 AM
File submissions	Nuclear Disasters.docx
Submission comments	Comments (0)

Feedback

Grade	59.00 / 100.00
Graded on	Tuesday, 17 June 2014, 11:06 AM
Graded by	Judy Stanton
Feedback comments	x ← You have summarised this subject well, but your in text references could do with some work. For more information on Harvard referencing ...

You are logged in as [Bart Simpson](#) ([Logout](#))

Assignment Submission: [A Brief History of Springfield](#)

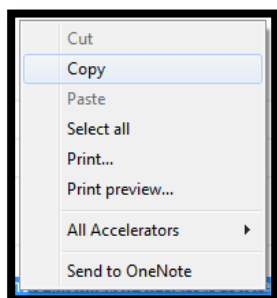
Click on the cross to show the entire text.

Feedback comments x

You have summarised this subject well, but your in text references could do with some work. For more information on Harvard referencing you may wish to refer to the guidance that I posted earlier.

You have engaged well with the material given, but you could improve this by doing a bit more research for additional materials, and linking your work more to the course themes.

Highlight the text and copy using ctrl+c or right clicking the mouse and selecting copy.

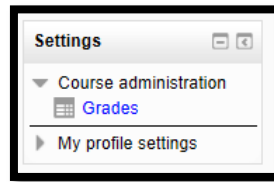


Open a Word document and paste the text. You can do this by using the shortcut ctrl+v, using the Paste option in the ribbon tool bar, or by right-clicking and selecting the paste option.

Save the document using File – Save As. This can now be printed from the document as usual.

VIEWING AND PRINTING GRADES

In order to view all your grades on the course, whilst in the Submission Area click on the 'settings' tab.



Under Course Administration you will find a link for Grades. Click on this.

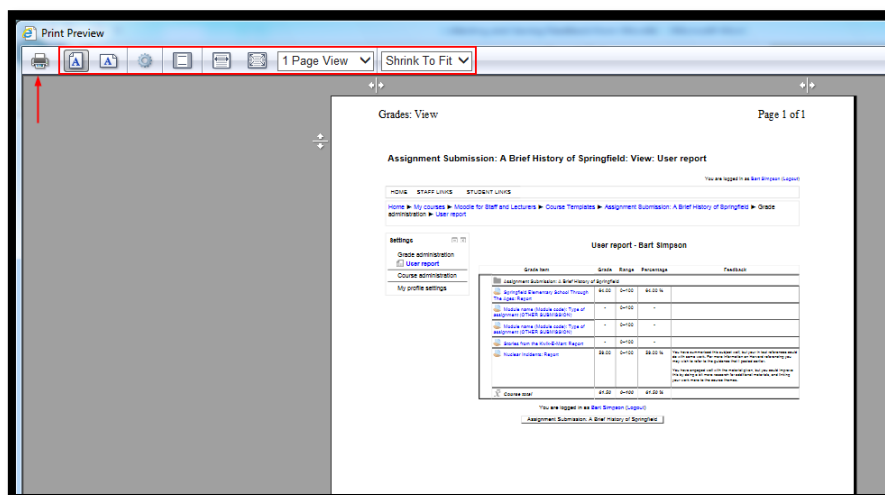
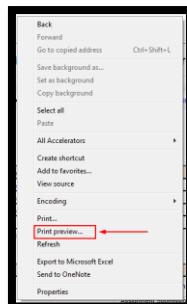
Grade item	Grade	Range	Percentage	Feedback
Assignment Submission: A Brief History of Springfield				
Springfield Elementary School Through The Ages: Report	64.00	0-100	64.00 %	
Module name (Module code): Type of assignment (OTHER SUBMISSION)	-	0-100	-	
Module name (Module code): Type of assignment (OTHER SUBMISSION)	-	0-100	-	
Stories from the Kwik-E-Mart: Report	-	0-100	-	
Nuclear Incidents: Report	59.00	0-100	59.00 %	You have summarised this subject well, but your in text references could do with some work. For more information on Harvard referencing you may wish to refer to the guidance that I posted earlier. You have engaged well with the material given, but you could improve this by doing a bit more research for additional materials, and linking your work more to the course themes.
Course total	61.50	0-100	61.50 %	

You are logged in as **Bart Simpson** (Logout)

Assignment Submission: A Brief History of Springfield

The screen will show a list of all the grades received so far, and any feedback that was included in the Feedback box (i.e. not given in file format).

In order to print, right click the mouse anywhere in the window, and select the print preview option. Adjust the settings if required to ensure that it will print correctly, and click on the Print button.



Moodle is reset during the Summer, so please ensure that you download your feedback prior to the end of year Boards for your area.